

TMODULAR

MODULAR TYPE SHANKS FOR VARIOUS TURNING APPLICATIONS

- ▶ Excellent machining stability
- ▶ Very strong increase in productivity
- ▶ Compatible with TAbsorber heads
 - ▶ Excellent chip evacuation
 - ▶ Y-axis turning heads

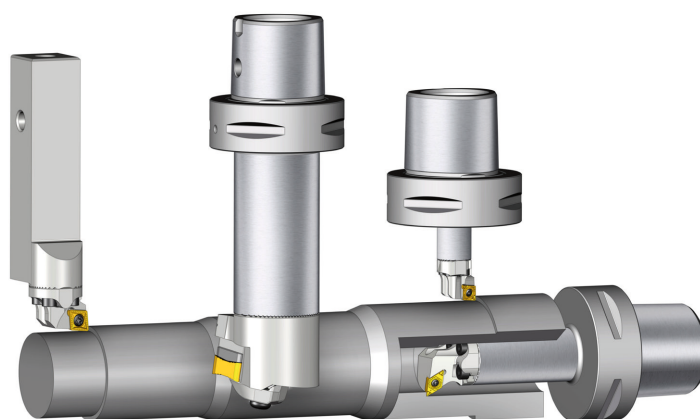


PRODUKTÜBERSICHT

New TModular line of head changeable shanks for various turning operations.

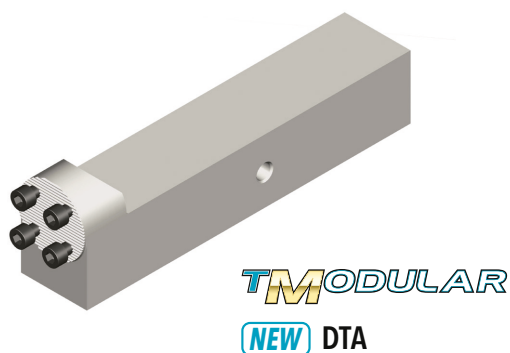
Ingersoll has introduced a new modular type of head changeable holders compatible with both external and internal turning applications. The line is available in two modular types: a square shank for external turning and a C-adapter for internal, external and Y-axis operations. In addition, the current **TAbsorber** head can be mounted to the **TModular** shanks, thereby widening the range of applications even further.

The **TModular's** Y-axis turning head provides excellent machining stability and a dramatic productivity increase. Further, the new Y-axis head demonstrates high performance machining as it is compatible with our **TNMV** and **ZNMV** insert lines.

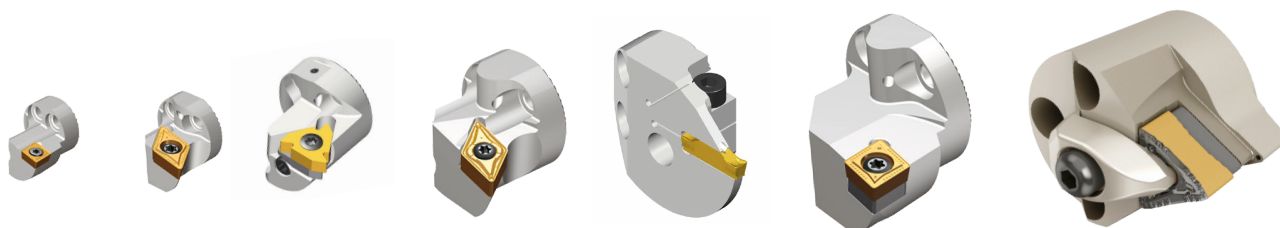
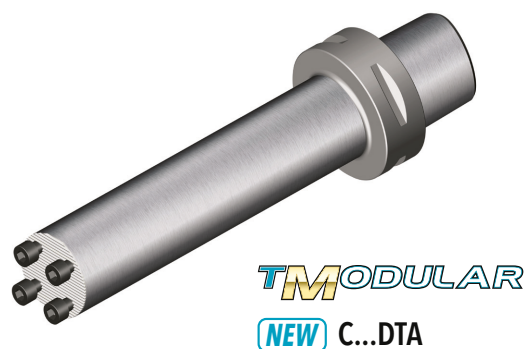


HEAD CHANGEABLE TMODULAR SHANKS

Square shanks

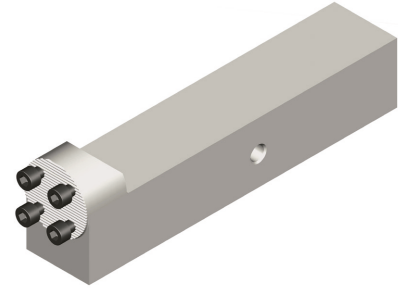


C-Adapter shanks



DTA SHANK FEATURES

- Square type modular shank for external turning
- Compatible with **TAbsorber** heads
- Available shank sizes: 20x20, 25x25, 32x32, 40x40 mm
- One holder for both right and left handed machining



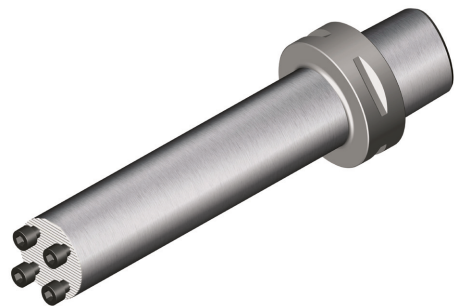
DTA-2525N-D32-TB

1 2 3 4 5

- 1** – TModular square shank
- 2** – Shank size (Height x Width)
- 3** – Hand type (N: Neutral)
- 4** – Head connection size (Ø20, 25, 32, 40 mm)
- 5** – CoolBurst

C...DTA SHANK FEATURES

- **C-Adapter** type modular shank for external, internal and Y-axis turning
- Compatible with existing **TAbsorber** heads and the new **TModular** Y-axis turning heads
- Available shank diameter sizes: Ø16, 20, 25, 32, 40 mm
- One holder for both right and left handed machining








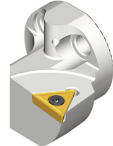
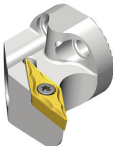



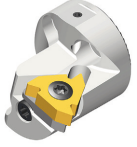
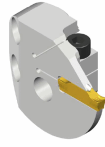




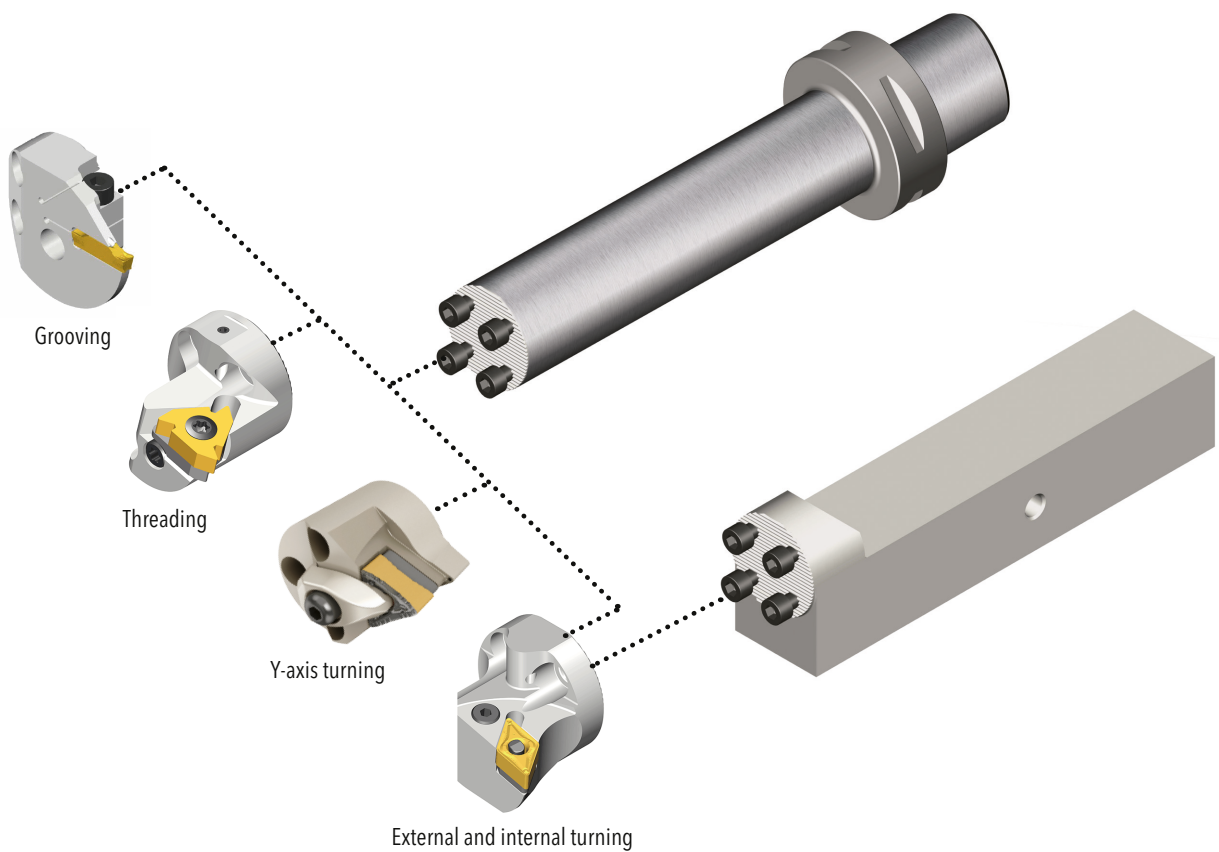
C6-DTA-D32A-4D

1 2 3 4 5

- 1** – C-Adapter size
- 2** – TModular C-Adapter shank
- 3** – Shank size (Ø16, 20, 25, 32, 40 mm)
- 4** – Shank type (A: Steel, E: Carbide core)
- 5** – Tool length (2.5xBD, 3xBD, 4xBD, 5xBD)

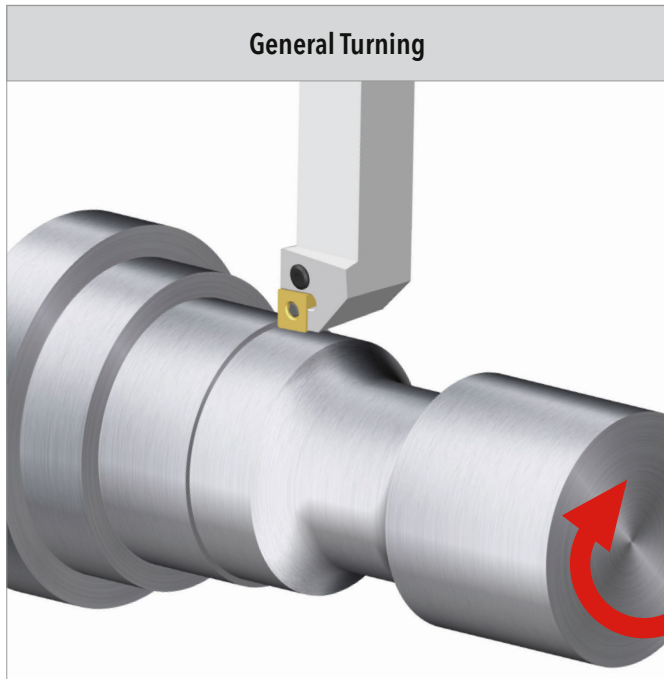
HEADS BY APPLICATION

For external and internal turning					
 TABSORBER DTC-HCLNR/L	 TABSORBER DTC-HDUNR/L	 TABSORBER DTC-HVUNR/L	 TABSORBER DTC-SCLCR/L	 TABSORBER DTC-SCLNR/L	 TABSORBER DTC-SDUCR/L
 TABSORBER DTC-SDUNR/L	 TABSORBER DTC-STFCR/L	 TABSORBER DTC-SVUBR/L	 TABSORBER DTC-SWLNR/L	 TABSORBER DTC-SXUNR/L	 TABSORBER DTC-TCLNR/L
For threading	For grooving	For Y-axis turning			
 TABSORBER DTC-SIR/L	 TABSORBER DTC-TTIR/L	 TMODULAR DTC-D..Y-TTXNN	 TMODULAR DTC-D..Y-TZXNN		

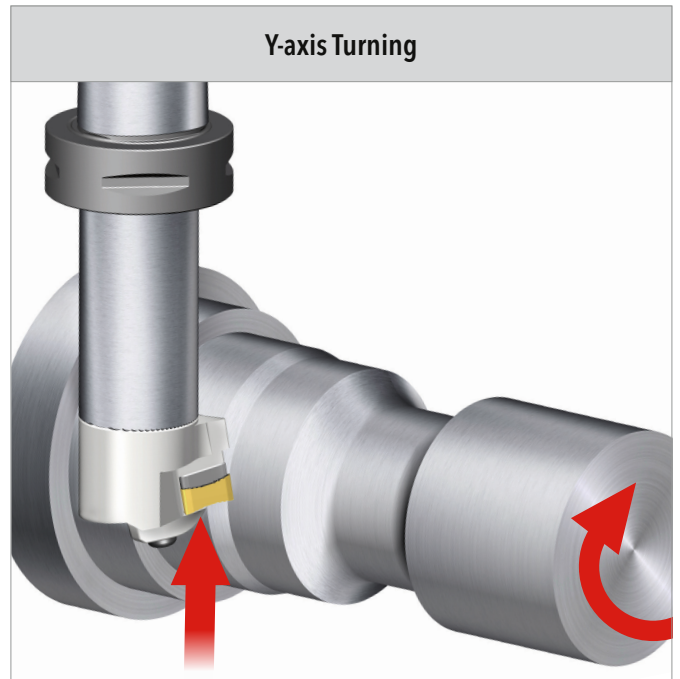


DTC-D.Y HEAD FEATURES

- **Y-axis turning heads**
 - High rigidity head design enables excellent machining stability



Perpendicular cutting force to the holder: **Vibration**



Parallel cutting force to the holder: **Stable machining**

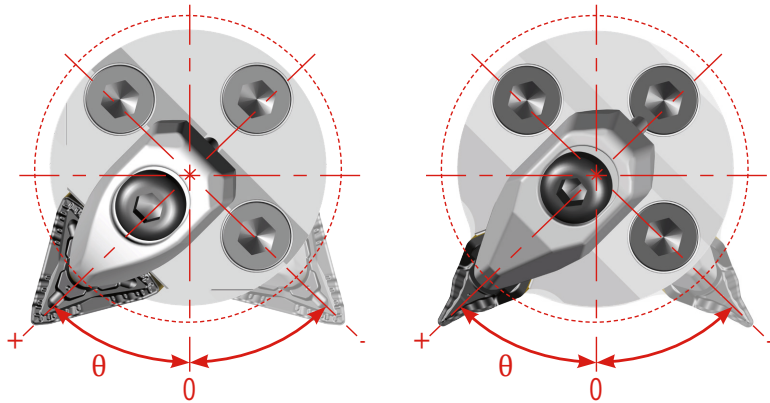
- Excellent chip evacuation design minimizes workpiece damage by chips



Y-axis turning means chips fall to the ground thus avoiding collision with the workpiece

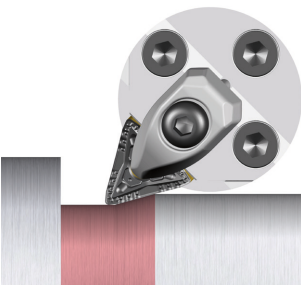
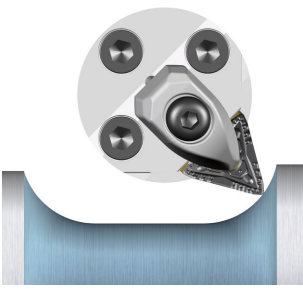
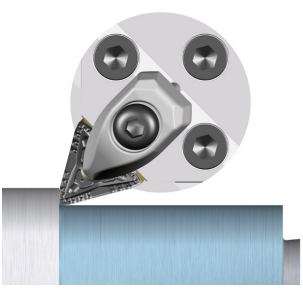
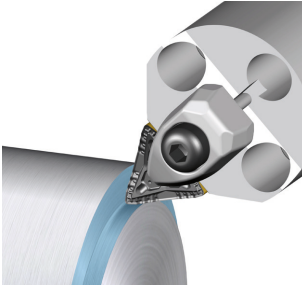
TECHNICAL FEATURES & ADVANTAGES

- Compatible with the **TNMV** and **ZNMV** high productivity insert lines
- Maximize productivity by applying one tool to all turning applications

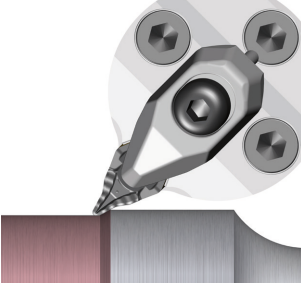
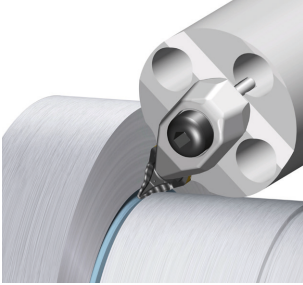
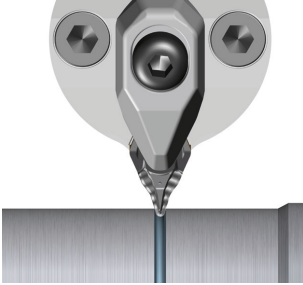
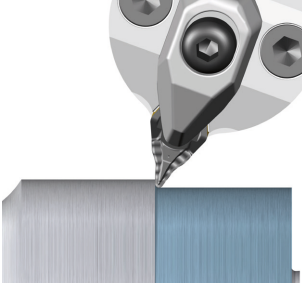


VARIOUS APPLICATIONS

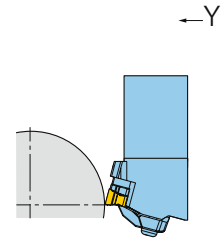
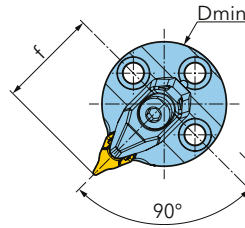
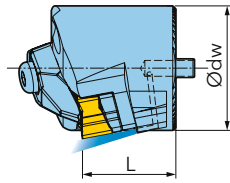
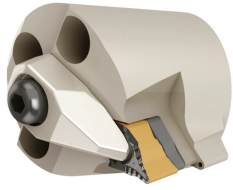
TNMV inserts and Y-TTXNN holder

High feed backward turning $\theta = 45^\circ$	Profiling $\theta = 45 \sim -45^\circ$	Forward turning $\theta = 45^\circ$	Forward facing $\theta = 45^\circ$
			

ZNMV inserts and Y-TZXNN holder

High feed backward turning $\theta = 45^\circ$	Undercutting $\theta = 45^\circ$	Grooving and turning $\theta = 0^\circ$	Forward turning $\theta = 20^\circ$
			

**EXCHANGEABLE HEAD FOR TURNING WITH Y-AXIS
FOR NEGATIVE ZNMV INSERTS**

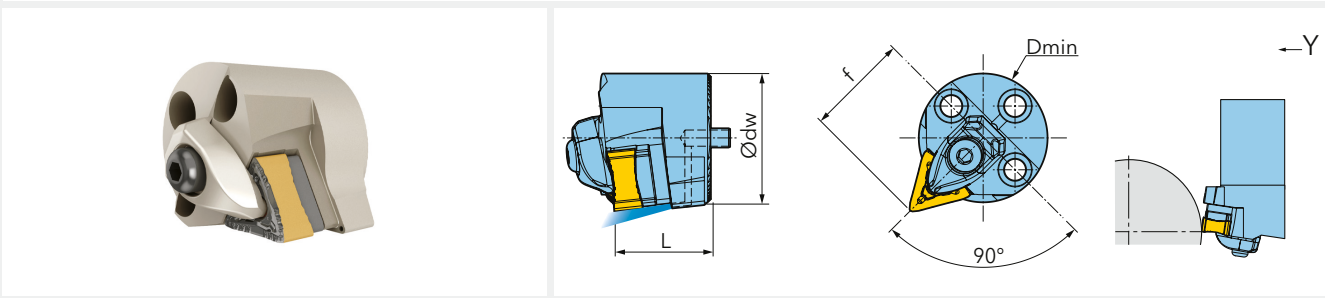


Designation	D min.	dw	L	f	kg	IK
DTC-D40Y-TZXNN-1410-TB	40	40	30	32	0,335	✓

Designation								
DTC-D40Y-TZXNN-1410-TB	ZNMV 1410_	DLM 3.3Z-NV	DLS 5	DSP 5	TSZ 140310	TS 35083I/HG	L-W 4	T 10

① = clamp ② = clamp screw ③ = spring ④ = shim ⑤ = insert screw ⑥ = wrench ⑦ = wrench

**EXCHANGEABLE HEAD FOR DRILLING WITH Y-AXIS
FOR NEGATIVE 60° TNMV INSERTS**

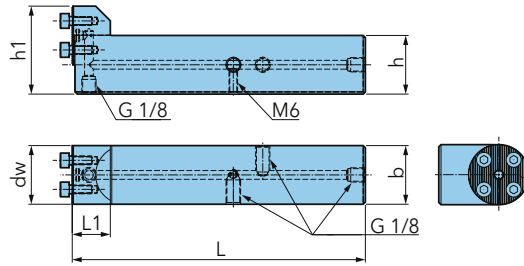


Designation	D min.	dw	L	f	kg	IK
DTC-D40Y-TTXNN-2109-TB	40	40	30	32	0,335	✓

Designation								
DTC-D40Y-TTXNN-2109-TB	TNMV 2109_	DLM 4.4T-NV	DLS 5	DSP 5	TSTV 210510	TS 35083I/HG	L-W 4	T 10

① = clamp ② = clamp screw ③ = spring ④ = shim ⑤ = insert screw ⑥ = wrench ⑦ = wrench

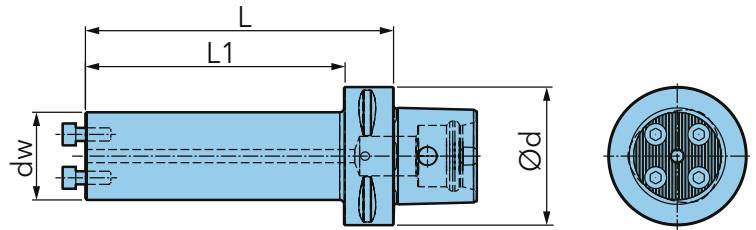
SHANK ADAPTION FOR MODULAR HEADS



Designation	dw	L	L1	h	h1	b	BSP	kg	IK	①	②	③	④
DTA-2020N-D20-TB	20	92	21	20	30	20	G1/8	0,315	✓	SH M3.5X0.6X10	RSS M6	PLG G1/8-L6.5	L-W 2.5
DTA-2020N-D25-TB	25	92	21	20	32,5	20	G1/8	0,315	✓	SH M4x0.7x12	RSS M6	PLG G1/8-L6.5	WS-0060
DTA-2020N-D32-TB	32	92	21	20	36	20	G1/8	0,315	✓	SH M5x0.8x12	RSS M6	PLG G1/8-L6.5	L-W 4
DTA-2525N-D25-TB	25	107	21	25	37,5	25	G1/8	0,420	✓	SH M4x0.7x12	RSS M6	PLG G1/8-L6.5	WS-0060
DTA-2525N-D32-TB	32	107	21	25	41	25	G1/8	0,420	✓	SH M5x0.8x12	RSS M6	PLG G1/8-L6.5	L-W 4
DTA-2525N-D40-TB	40	107	21	25	45	25	G1/8	0,420	✓	SH M6x1x16	RSS M6	PLG G1/8-L6.5	L-W 5
DTA-3232N-D32-TB	32	152	21	32	48	32	G1/8	0,550	✓	SH M5x0.8x12	-	PLG G1/8-L6.5	L-W 4
DTA-3232N-D40-TB	40	152	26	32	52	32	G1/8	0,550	✓	SH M6x1x16	-	PLG G1/8-L6.5	L-W 5
DTA-4040N-D40-TB	40	200	26	40	60	40	G1/8	0,610	✓	SH M6x1x16	-	PLG G1/8-L6.5	L-W 5

① = clamp screw ② = adjusting screw ③ = plug ④ = wrench

CAPTO ADAPTION FOR MODULAR HEADS



Designation	d	dw	L	L1	kg	IK	①	②
C4-DTA-16A-2.5D	40	16	40	20	0,310	✓	SH M3X0.5X10	LW 2.5
C4-DTA-20A-2.5D	40	20	50	30	0,345	✓	SH M3.5X0.6X10	LW 2.5
C4-DTA-25A-2.5D	40	25	55	35	0,405	✓	SH M3.5X0.6X10	WS-0060
C4-DTA-32A-2.5D	40	32	75	55	0,615	✓	SH M5x0.8x12	LW 4
C4-DTA-40A-3D	40	40	80	80	0,845	✓	SH M6x1x16	LW 5
C5-DTA-16A-2.5D	50	16	40	20	0,510	✓	SH M3X0.5X10	LW 2.5
C5-DTA-20A-2.5D	50	20	50	30	0,580	✓	SH M3.5X0.6X10	LW 2.5
C5-DTA-25A-2.5D	50	25	55	35	0,645	✓	SH M3.5X0.6X10	WS-0060
C5-DTA-32A-2.5D	50	32	75	55	0,825	✓	SH M5x0.8x12	LW 4
C5-DTA-40A-3D	50	40	100	80	1,265	✓	SH M6x1x16	LW 5
C6-DTA-16A-2.5D	63	16	40	18	0,865	✓	SH M3X0.5X10	LW 2.5
C6-DTA-20A-2.5D	63	20	50	28	0,900	✓	SH M3.5X0.6X10	LW 2.5
C6-DTA-25A-2.5D	63	25	65	43	0,980	✓	SH M3.5X0.6X10	WS-0060
C6-DTA-32A-3D	63	32	90	68	1,235	✓	SH M5x0.8x12	LW 4
C6-DTA-32A-4D	63	32	125	103	1,445	✓	SH M5x0.8x12	LW 4
C6-DTA-40A-3D	63	40	100	78	1,580	✓	SH M6x1x16	LW 5
C6-DTA-40A-4D	63	40	140	118	1,965	✓	SH M6x1x16	LW 5
C6-DTA-16E-5D	63	16	80	58	0,945	✓	SH M3X0.5X10	LW 2.5
C6-DTA-20E-5D	63	20	100	78	1,065	✓	SH M3.5X0.6X10	LW 2.5
C6-DTA-25E-5D	63	25	115	93	1,265	✓	SH M3.5X0.6X10	WS-0060
C6-DTA-32E-5D	63	32	150	128	1,750	✓	SH M5x0.8x12	LW 4
C6-DTA-40E-5D	63	40	185	163	2,635	✓	SH M6x1x16	LW 5

① = clamp screw ② = wrench

Ingersoll Cutting Tools
Marketing- & Technologie-Standorte

Germany / Allemagne
Ingersoll Werkzeuge GmbH

Kalteiche-Ring 21-25
35708 Haiger, Germany
Telefon: +49(0)27 73-7 42-0
E-Mail: info@ingersoll-imc.de
Internet: www.ingersoll-imc.de

France
Ingersoll France

22, rue Albert Einstein
F-77420 CHAMPS-sur-MARNE
Téléphone: +33(0)1 64 68 45 36
E-Mail: info@ingersoll-imc.fr
Internet: www.ingersoll-imc.fr

