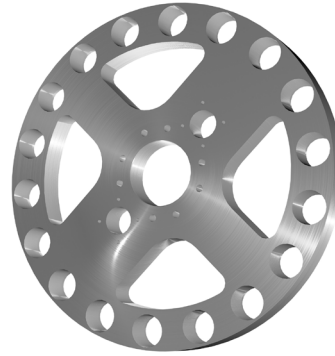


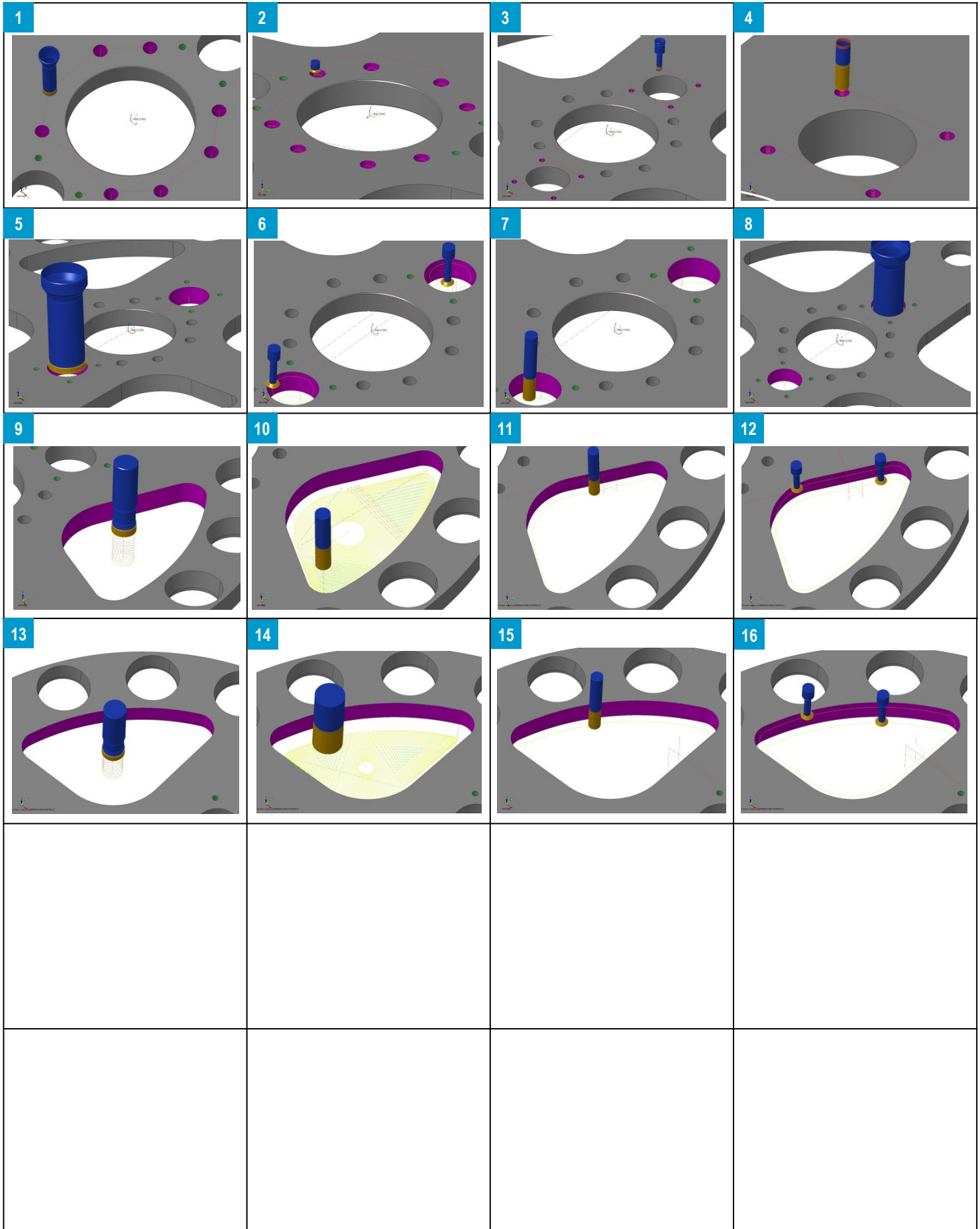
BIMATEC SORALUCE



Halle / Hall	3	Uhrzeit / Time
Maschine / Machine	SORALUCE TA-A 25 / Bettfräsmaschine / Bed type milling machine / SK50	10:00 - 10:30 Uhr
Industrie / Industry	Maschinenbau; Lebensmittelindustrie / mechanical engineering; food industry	13:00 - 13:30 Uhr
Bauteil / Workpiece	Praxis-Bauteil / Real-Part "Trägerplatte"	16:00 - 16:30 Uhr
Material / Material	1.4301 (V2A / X5CrNi18-10 / 700N/mm ²) Ø806 x 30 mm	
CAM / CNC control	Heidenhain TNC 640	
Spannmittel / Clamping tool	Firma Polund / Company Polund PRO-CLAMP Systems	










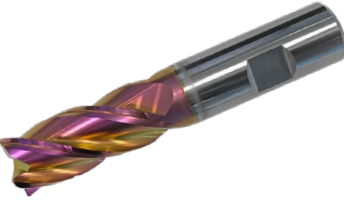






Nr. / No.	Bearbeitung / Machining	Werkzeug / Tool	Ø	z	Vc [m/min]	fz [mm]	n [U/min]	vf [mm/min]	ae [mm]	ap [mm]	Wendeplatte / Insert	Qualität / Grade
1	Bohren / Boring	TD1700051JER00	17	2	70	fu 0,16	1315	210	17	30	TMA1700R01	IN2505
2	Fasen / Chamfering	46N11610T6RA45	11,6	3	146	0,03	4000	360	0,5	0,5	-	IN2005
3	Bohren-Fasen / Boring-Chamfering	TC0850026JCR01	8,5	2	60	fu 0,1 0,14	2250	225 315	8,5	28	TMA0850R01 KOMT050104R	IN2505
4	Gewinde fräsen / Thread milling	MTECB08078C17 1.5ISO	7,8	3	80	0,015	3265	147	0,75	17	-	IN2005
5	Bohren / Boring	QR0610130JJR00	63	1	160	fu 0,12	810	97	63	30	SOMT11T308SK	IN2505
6	Fasen / Chamfering	15N1D017045T3R00	17	4	214	0,06	4000	960	0,5	0,5	SDMT050204N	IN2505
7	Besäumen schlichten / Finishing	47C16036W3RQ321	16	4	160	0,05	3185	640	0,7	30		IN2205
8	Spindeln schlichten / Finishing Spindles	TRM50	65H7	1	160	0,05	785	40	0,3	30	CCGT 09T302 SA	TT5080
9	Bohrzirkular / Circular milling	1TJ1G032040W6R00	32	3	140	0,12	1395	500	30	3,5	MNHU110608R-M	IN2505
10	Adaptiv/Trochoidales fräsen / Waveforming	47C20041W4RN041 chip breaker	20	4	200	0,16	3185	2040	1,6	30	-	IN2205
11	Besäumen schlichten / Finishing	47C16036W3RQ321	16	4	200	0,06	4000	955	0,3	30	-	IN2205
12	Fasen / Chamfering	15N1D017045T3R00	17	4	214	0,06	4000	960	0,5	0,5	SDMT050204N	IN2505
13	Bohrzirkular / Circular milling	1TJ1G032040W6R00	32	3	140	0,12	1395	500	30	3,5	MNHU110608R-M	IN2505
14	Adaptiv/Trochoidales fräsen / Waveforming	22J3P040043Z4R00	40	4	180	0,35	1435	2005	2,5	30	ZOMT09T304R chip breaker	IN2035
15	Besäumen schlichten / Finishing	47C16036W3RQ321	16	4	200	0,06	4000	955	0,3	30	-	IN2205
16	Fasen / Chamfering	15N1D017045T3R00	17	4	214	0,06	4000	960	0,5	0,5	SDMT050204N	IN2505

BEARBEITUNGSSCHRITTE MACHINING STEPS



BEARBEITUNGSSCHRITTE

MACHINING STEPS

<p>1</p> 	<p>2</p> 	<p>3</p> 	<p>4</p> 
<p>5</p> 	<p>6</p> 	<p>7</p> 	<p>8</p> 
<p>9</p> 	<p>10</p> 	<p>11</p> 	<p>12</p> 
<p>13</p> 	<p>14</p> 	<p>15</p> 	<p>16</p> 
<p></p>	<p></p>	<p></p>	<p></p>
<p></p>	<p></p>	<p></p>	<p></p>