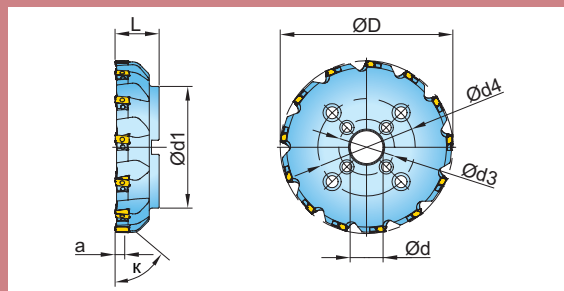
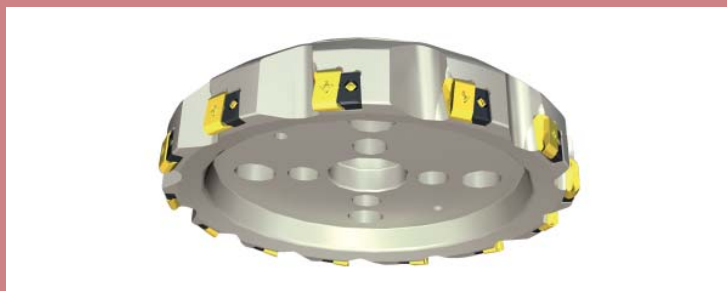




SOMAX™ ECKFRÄSER SJ2R



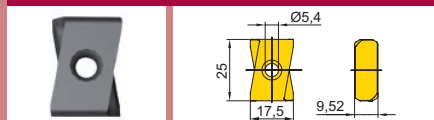
FRÄSERAUFNAHME NACH DIN 8030



Artikel-Nr.	D	d	d1	d3	d4	L	κ	a	Z	kg
SJ2R125R00	125	40	100	-	-	63	90°	23	6	3,30
SJ2R160R00	160	40	130	66,7	-	63	90°	23	7	5,50
SJ2R200R00	200	60	160	101,6	-	63	90°	23	9	7,60
SJ2R250R00	250	60	221	101,6	-	63	90°	23	11	13,90
SJ2R315R00	315	60	221	101,6	177,8	80	90°	23	13	24,50

WENDESCHEIDPLATTEN

DPM436R103



Artikel-Nr.	Ausführung	Qualität	IN2015	IN6530						
-------------	------------	----------	--------	--------	--	--	--	--	--	--

DPM436R103 positive Geometrie



● = P ● = M ● = K ● = N ● = S ● = H

ZUBEHÖR



SM50-160-10

DS-T20S

PAR0629

① = Spannschraube ② = Schraubendreher ③ = Anlageklotz